

Map Change Viewer – El Paso County, Texas

How to use the Interactive Viewer

The Federal Emergency Management Agency (FEMA), in coordination with community officials throughout El Paso County, Texas have worked together to update the flood hazard information for the areas within the County. Since 2016, FEMA has been coordinating with community and technical officials, levee owners, State and Federal partners to analyze, assess and define flood prone areas within the County. The results of the study effort were released as preliminary Flood Insurance Rate Maps (FIRM) on July 8, 2020.

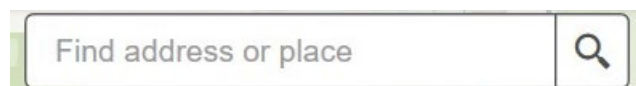
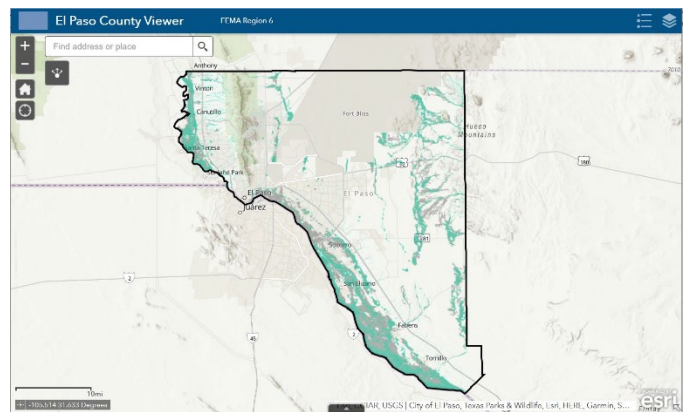
Preliminary data is available for review and guidance purposes and cannot be used to rate insurance policies or determine mandatory flood insurance purchase requirements until they have been issued effective. To support community and public review of the revisions, FEMA compiled the historic (October 1982 through December 2019) and preliminary (July 2020) FIRM information in an interactive web map. This tool also includes a change layer allowing users to determine where flood hazards have increased (**red**) and decreased (**green**) with a click.

How can I look at the flood hazard information in my area?

An interactive tool is available at: <https://tinyurl.com/EP-ViewChange>. The tool functions best in Mozilla Firefox, Google Chrome or Apple Safari browsers on any computer. Follow the steps below to review flood changes in your area.

Step 1. To launch the interactive tool, enter <https://tinyurl.com/EP-ViewChange> into your browser. Users will be greeted with a disclaimer window. Click **OK** to review the preliminary flood data.

Step 2. At the top left-hand corner of the viewer, users can enter a location, address or latitude/longitude point and the viewer will zoom to your location of interest.



Once the tool identifies the address or location entered by the user, it will load the preliminary flood hazard information. If the address pin (black dot) is located in a teal color shaded area, the property address is included in a high hazard flood area on the preliminary FIRM. If the property address is located in a grey shaded area, the flood risk is moderate. Two other layers – change layer and effective FIRM are also available for viewing.

Other features to enhance the user experience include:



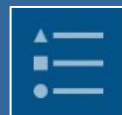
In the viewing window on the left, users can zoom in and out using the (+) and (-) buttons available.



To zoom out to see the entire county area, click the HOME button.



To allow the viewer to locate you, click the compass button and make sure your device has location service enabled.



The LEGEND can be opened by clicking on the button shown. This button is available on the upper right-hand side of the viewer.



Users can turn on and off one of three layers by clicking the LAYERS button shown. In order to review the current effective information or the change layer, users will need to turn them on here.