

Rudi Kuefner Dr. (Detour)

Starting: Monday 9/10/18 at 9:00am

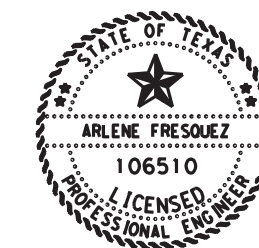
Duration: Approx. 24 Hrs.

NOTES:

1. REFER TO PHASE I STAGE B LAYOUTS.
2. REFER TO WZ AND BC STANDARDS FOR MINIMUM SPACING OF DETOUR SIGNS.
3. PLACE SIGNS AT LOCATION SHOWN AS FIELD CONDITIONS PERMIT. SIGNS TO REMAIN IN PLACE WHILE INTERSECTION IS CLOSED. REMOVE SIGNS WHEN OPEN TO TRAFFIC OR AS DIRECTED.
4. PLACEMENT AND REMOVAL OF DETOUR SIGNS ARE SUBSIDIARY TO ITEM 502.
5. USE PORTABLE MESSAGE SIGNS TO NOTIFY TRAVELING PUBLIC OF INTERSECTION CLOSURES. DISPLAY MESSAGE AS DIRECTED FOR TWO WEEKS IN ADVANCE OF CLOSURE.
6. USE CHANNELIZING DEVICES AT 10' O.C. TO PROHIBIT LEFT TURN MOVEMENT WHILE INTERSECTION IS CLOSED.

LEGEND

- CHANNELIZING DEVICE
- ⊥ PROP SIGN
- ⊥ EXISTING SIGN
- ▨ BARRICADE TYPE III
- ▨ WORK ZONE
- ⬇ FLASHING ARROW PANEL
- ⬇ PORTABLE MESSAGE SIGN
- TRAFFIC FLOW
- ↪ DETOUR FLOW PATH



Arlene Fresquez, P.E.

06/03/2016

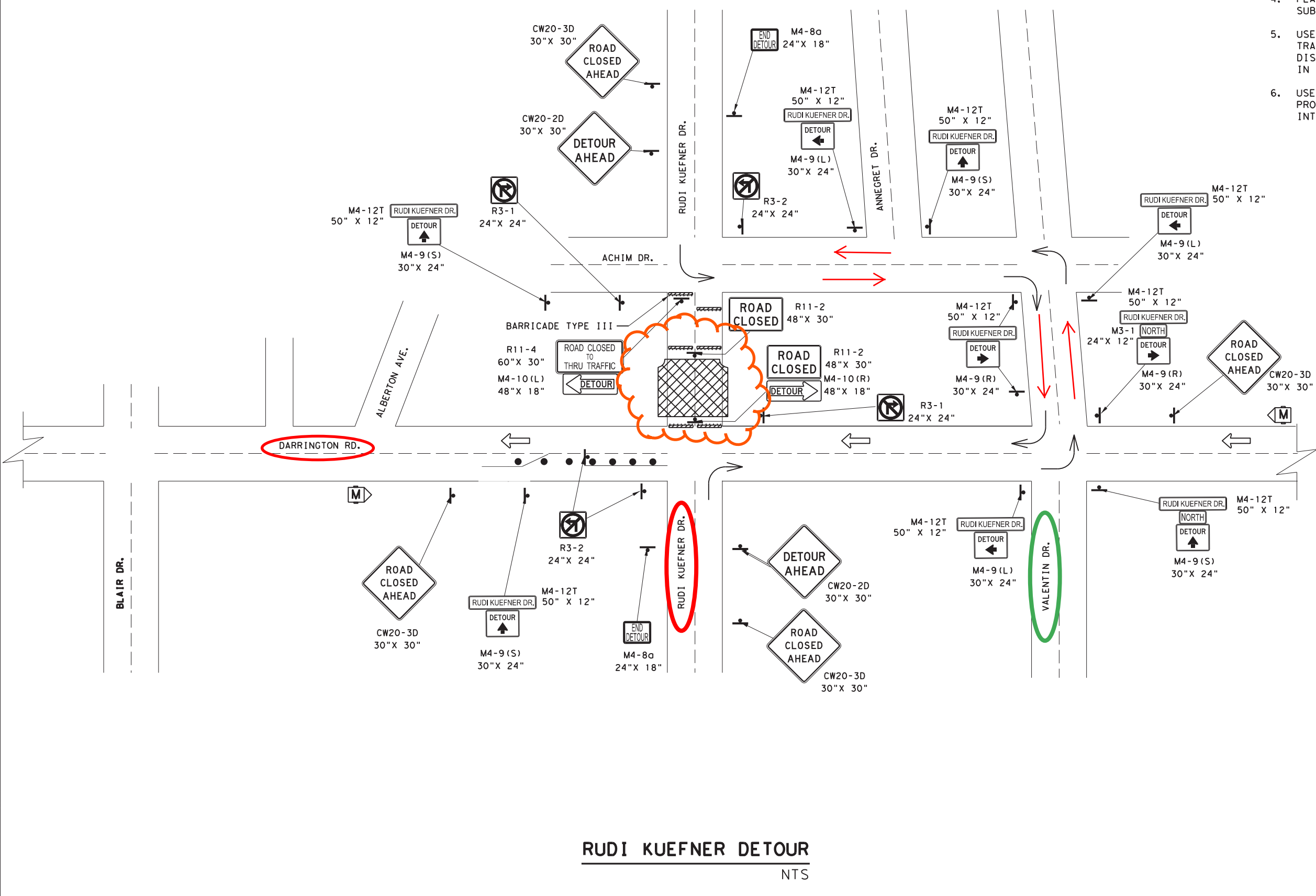
DARRINGTON RD. TRAFFIC CONTROL PHASE I DETOUR LAYOUT

RUDI KUEFNER DR.

SHEET 1 OF 1

Texas Department of Transportation			
CONT	SECT	JOB	HIGHWAY
0924	06	457	CS
DIST	COUNTY		SHEET NO.
ELP	EL PASO		27

DATE: 6/2/2016 7:18:06 PM FILE: \\txdot\project\wiseonline.com\TXDOT5\Documents\24 - ELP\Design Projects\092406457\4 - Design\Plan Set\2 - TCP\ACS_TCP_PHASE 1 DETOUR.dgn



RUDI KUEFNER DETOUR

NTS