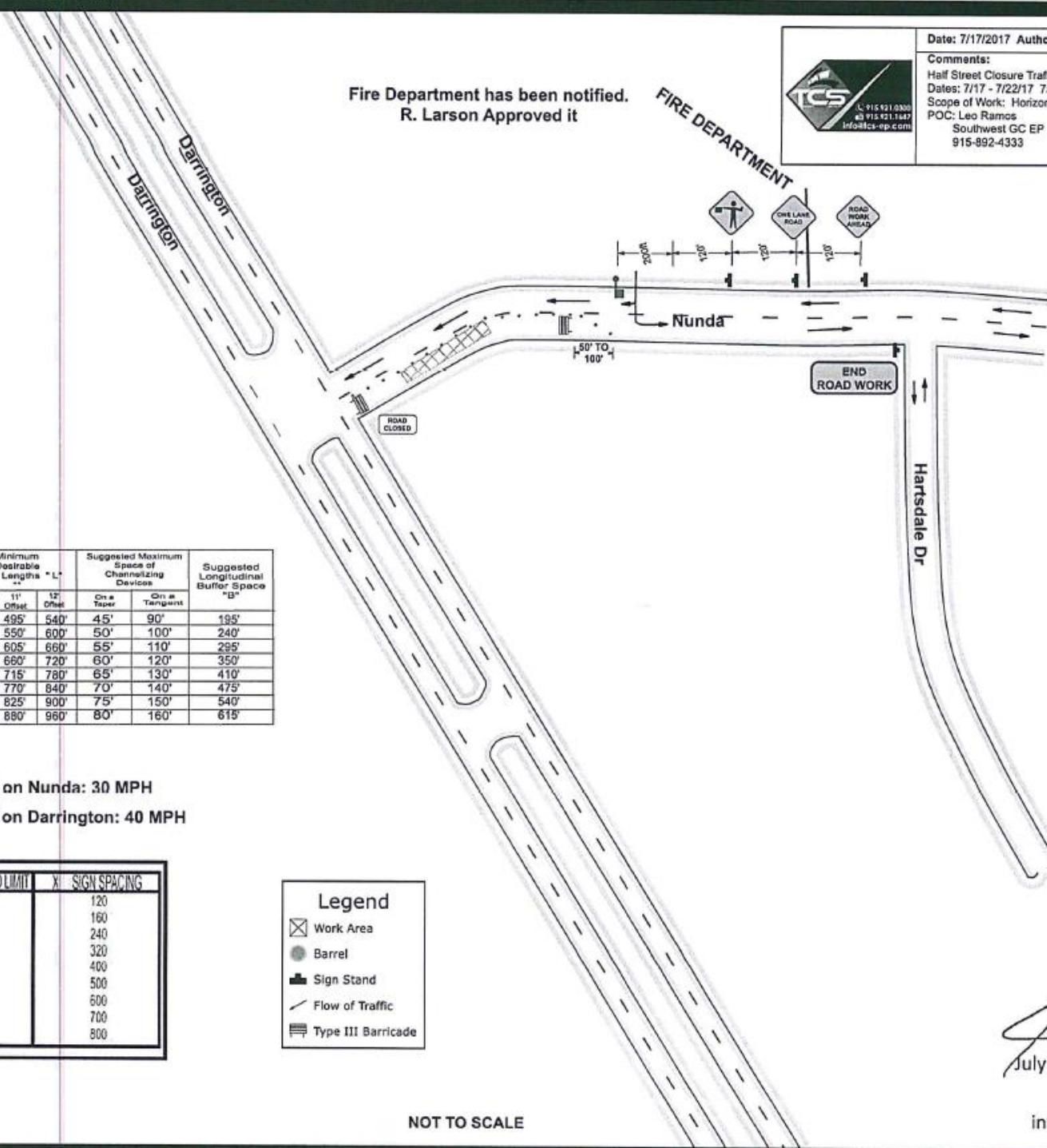


Comments:
 Half Street Closure Traffic Setup on Nunda between Darrington and Hartsdale Dr
 Dates: 7/17 - 7/22/17 7am - 4pm
 Scope of Work: Horizon Water/Water line & Sewer line Tie-In
 POC: Leo Ramos
 Southwest GC EP
 915-892-4333



Fire Department has been notified.
 R. Larson Approved it

FIRE DEPARTMENT



Posted Speed *	Formula	Minimum Desirable Taper Lengths ** L'			Suggested Maximum Space of Channelizing Devices		Suggested Longitudinal Buffer Space "B"
		10' Offset	11' Offset	12' Offset	On a Taper	On a Tangent	
45	L= WS	450'	495'	540'	45'	90'	195'
50		500'	550'	600'	50'	100'	240'
55		550'	605'	660'	55'	110'	295'
60		600'	660'	720'	60'	120'	350'
65		650'	715'	780'	65'	130'	410'
70		700'	770'	840'	70'	140'	475'
75		750'	825'	900'	75'	150'	540'
80		800'	880'	960'	80'	160'	615'

Posted Speed on Nunda: 30 MPH
 Posted Speed on Darrington: 40 MPH

POSTED SPEED LIMIT	XI SIGN SPACING
30	120
35	160
40	240
45	320
50	400
55	500
60	600
65	700
70	800

Legend

- Work Area
- Barrel
- Sign Stand
- Flow of Traffic
- Type III Barricade



Jaime Gallo, P.E.

July 14, 2017 | TBPE F-14940

G-3 Engineering, LLC
 info@g-3ng.com | (915) 209-5141

NOT TO SCALE